

Tender DRAFT

 Existing Fabric

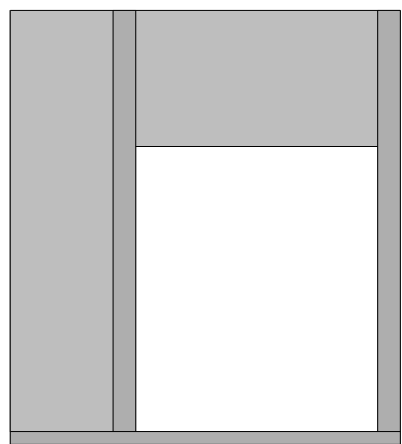
General Notes:

All demolition and proposed works are to be undertaken in adherence to SMC conditions and Listed Building Consent conditions.

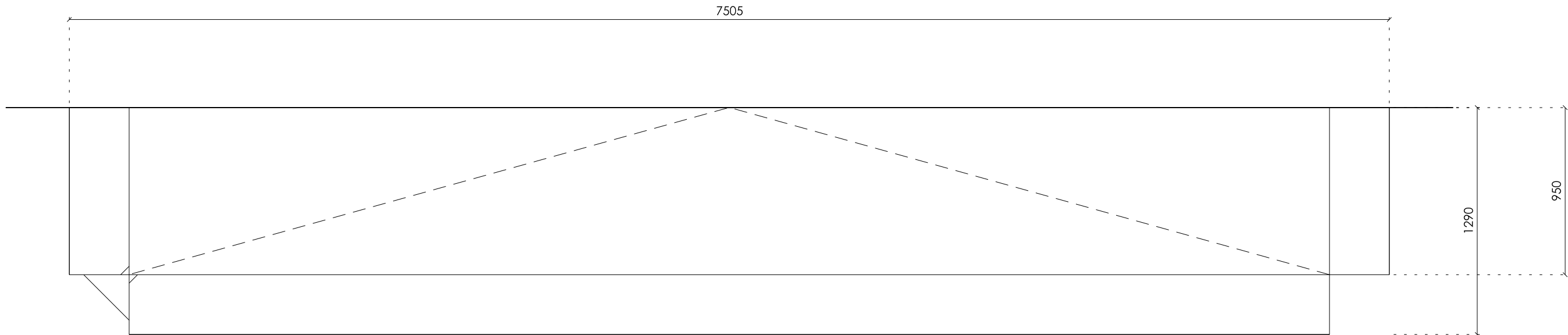
**Jamie Fobert  
— Architects**  
Rochelle, 22 Club Row  
London E2 7EY  
T: +44 (0) 207 553 6560  
mail@jamiefobertarchitects.com

Copyright of Jamie Fobert Architects Ltd 2023

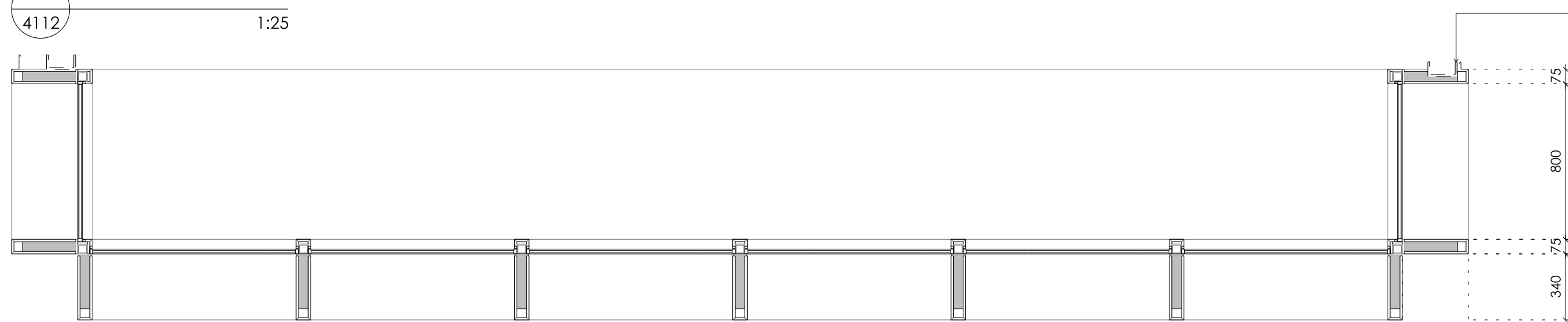
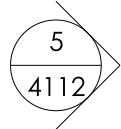
Unless indicated below, this drawing is for information only. Do not scale. Use figured dimensions only. All dimensions to be checked on site.			Project	The Tower of London
Issue/Revision	Date	Rev	Subject	Reveller: Lantern
Stage 4	18 07 25	A	Scale	1:25
Tender Draft	24 10 25	B	Original Size	A1
			Date	17 04 25
			Drawing No.	TOL_JFA_01_XX_DW_A_4112



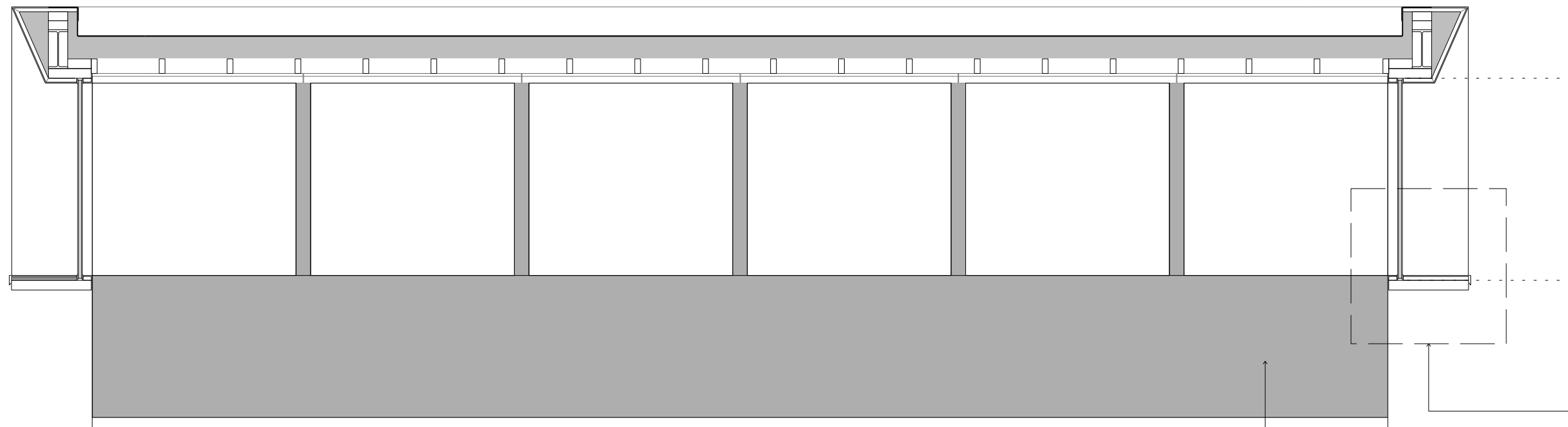
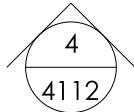
5  
4112  
Elevation  
1:25



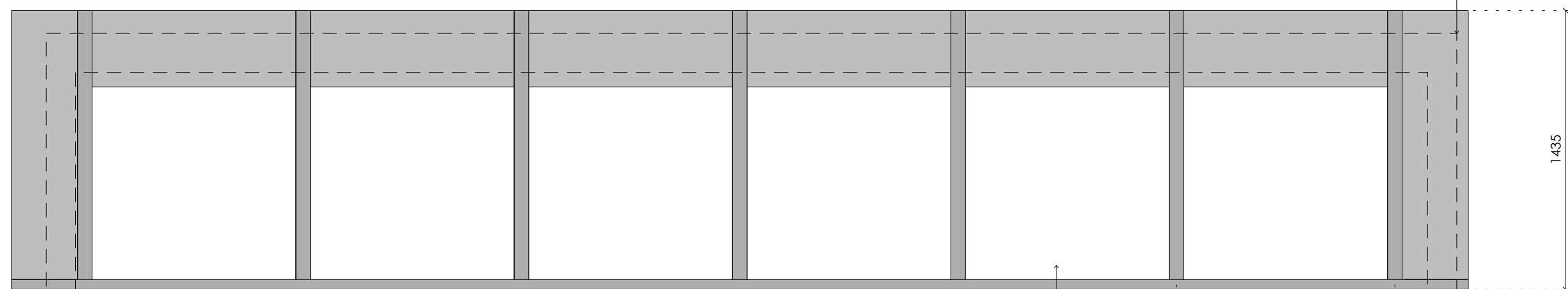
1  
4112  
Roof Plan  
1:25



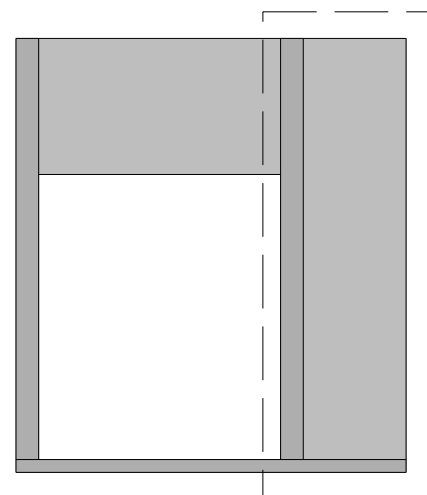
2  
4112  
RCP  
1:25



3  
4112  
Long Section  
1:25



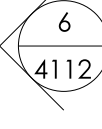
4  
4112  
Elevation  
1:25



6  
4112  
Elevation  
1:25

Existing PFC.

3  
4112



See JFA detail 5106.

Patinated brass panel to interior slab edge. K13.

Existing PFC.

See JFA detail 5103.

Celestary lantern with fixed glazing with patinated brass cladding. L10.